

# DEPOT LOCKERS & LOCKERS

Safe storage of your valuables

In the LOCKER you can easily store small items such as bags, street shoes or other valuables.

The DEPOT LOCKERS, on the other hand, have been developed to store the complete winter sports equipment. In the closets boot drying tubes are integrated to dry the damp shoes from day to night.

The storage cabinets can be purchased with different locking systems. LOCKERS with key or coin lock and DEPOT LOCKERS with key, coin or electronic card lock.

## LOCKER



locking system

available with key or coin lock

Storage of your valuables in the smallest space. Also available with coin collect / return locks.

Length x Width x Height	Capacity*	Item-No.
320 x 460 x 1900 mm / 1'1" x 1'6" x 6'3"	5	1055577
580 x 460 x 1900 mm / 1'11" x 1'6" x 6'3"	10	1055578
840 x 460 x 1900 mm / 2'9" x 1'6" x 6'3"	15	1055579

# MINI DEPOT



safe storage through personal locking system



fixation of the skis in aluminum rail



Safe storage of winter sports equipment. Also available with coin collect / return locks.

Length x Width x Height	Capacity*	Item-No.
1500 x 820 x 1300 mm / 4'11" x 2'8" x 4'3"	22	1055580



## DRYING UNITS FOR DEPOT LOCKER

To dry the equipment, the Depot Lockers can be equipped with a drying unit. This is available with room air or with integrated heating.

### DRYING UNIT ROOM AIR

Item-No.

1071591

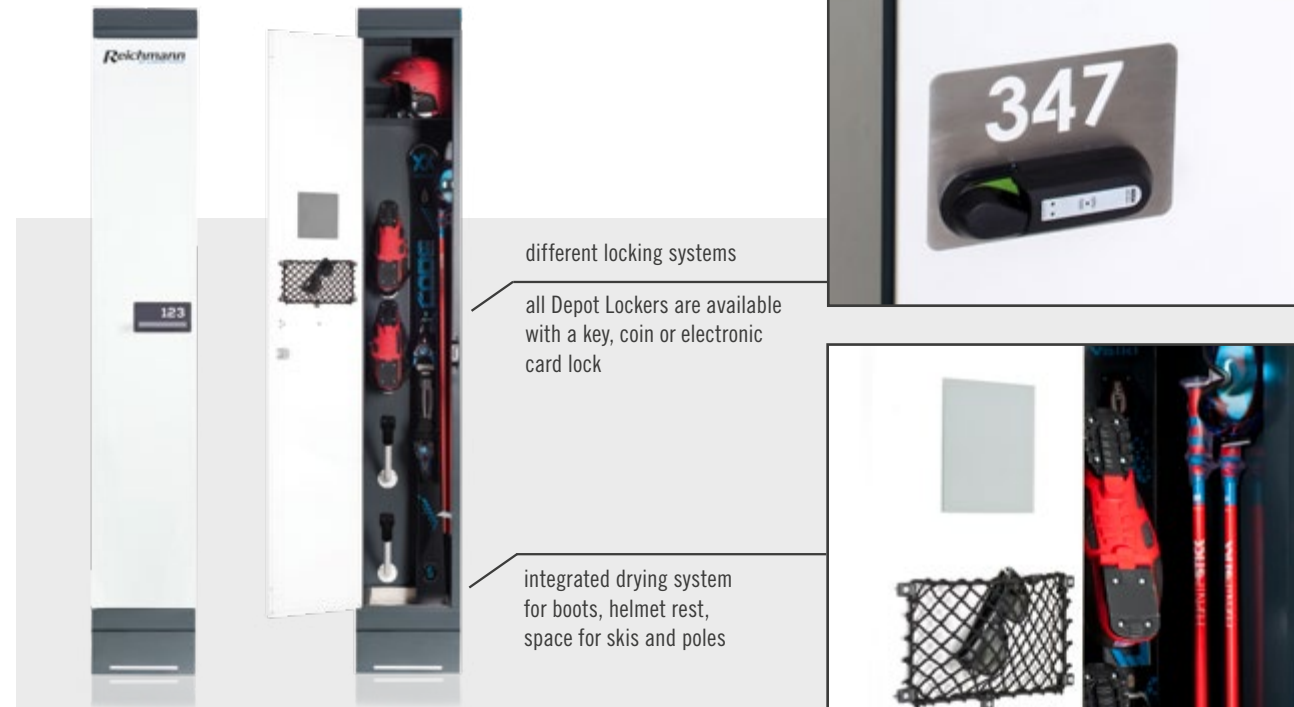
### DRYING UNIT HOT AIR

Item-No.

1068909

Each Single Depot Locker requires a drying unit. For the Double Depot Locker 350, one unit is sufficient.

## DEPOT LOCKER 350



The safe storage and drying of the winter sports equipment for you or the whole family. For the best possible use of space, the DEPOT LOCKERS are also available in direct connection (DOUBLE with two connected lockers).

Length x Depth x Height	Version	Set*	Item-No.
350 x 550 x 2150 mm / 1'2" x 1'10" x 7'1"	Single	2	1054894
700 x 550 x 2150 mm / 2'4" x 1'10" x 7'1"	Double	4	1055537

\*Set consists of a pair of ski / snowboard / boots / poles and helmet

## DEPOT LOCKER 500



secure stand

due to height-adjustable feet  
with or without steel cover

various floor plate options for  
water drainage available

DOUBLE version

direct connection of the lockers



The safe storage and drying of the winter sports equipment for you or the whole family. For the best possible use of space, the DEPOT LOCKERS are also available in direct connection (DOUBLE with two connected lockers).

Length x Depth x Height	Version	Set*	Item-No.
500 x 550 x 2150 mm / 1'8" x 1'10" x 7'1"	Single	4	1054895
1000 x 550 x 2150 mm / 3'3" x 1'10" x 7'1"	Double	8	1055539

\*Set consists of a pair of ski / snowboard / boots / poles and helmet



## ADDITIONAL EQUIPMENT DEPOT LOCKER



All DEPOT LOCKERs can be equipped with a locking system of your choice.

### LOCKING SYSTEMS

- standard key lock
- coin collect lock <sup>1</sup>
- coin return lock <sup>2</sup>
- electronic locking system <sup>3</sup>
- DigiLock Sola keypad lock <sup>4</sup>
- DigiLock Axis keypad lock with RFID reader



Choose from various equipment options to customize your DEPOT LOCKER to your individual needs.

### ACCESSORIES

- mirror M or L <sup>5</sup>
- door net M or L <sup>5</sup>
- additional hanger <sup>6</sup>
- steel plate with door number <sup>7</sup>
- logo cut in door
- drying tube for gloves
- drying tube for helmets <sup>8</sup>

## ADDITIONAL EQUIPMENT



There are many options for covering and equipping the DEPOT LOCKERS, as well as practical solutions for draining melt water at the bottom of the cabinet. Let us advise you on which equipment suits you best.

### DOOR DESIGN

- standard door <sup>9</sup>
- double door construction <sup>10</sup>
- door made of furniture board

### WATER DRAINAGE

- grated steel floor plate <sup>11</sup>
- rubber mat for floor plate
- stainless steel full floor plate with <sup>12</sup> water drainage

### FRONT COVERS

- stainless steel blind <sup>13</sup>
- galvanized steel blind anthracite <sup>14</sup>
- top cover to hide cabling <sup>15</sup>

### SIDE WALL COVERS

- steel cover
- furniture board
- integrated reader <sup>16</sup>