

Machine operation
through touch panelExact stone structure
grinding over
the entire lengthResidue-free grinding
fluid through
filter socket system

Premium base tuning

PROFI S150, PROFI S200 and PROFI S350

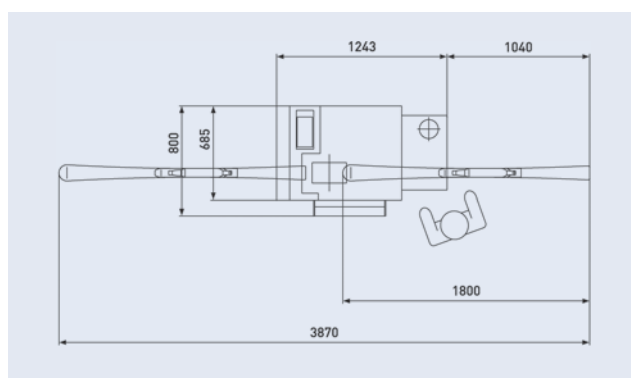
With a footprint under 1 m², the new PROFI S150 is the ideal stone machine, ranging from a carving ski to a race-skating-ski for perfect service. All alpine and nordic types will be serviced perfectly by PROFI S200 and PROFI S350 for a variety of snow conditions. The new Reichmann PROFI S series enable optimum turn and glide features for all winter sports fans. Each machine is fitted with a 150 mm, 200 mm or 350 mm wide, high-grade stone, and the future-proof "Profi Structure Package" (PSP) module. Its structure flexibility allows each machine the ability to offer your customer unlimited enjoyment for years to come. Proven "Made in Germany" workmanship, combined with convenient and intuitive handling, provides unique Reichmann base tuning quality. With our premium base tuning machines the right decision can be made for the service future.

BENEFITS FOR USER

- > Bigger user-friendly touch panel for fast and easy control
- > Fast and flexible service ensures excellent customer satisfaction
- > High level customer relationships through know-how transfer: saved surface structures from Reichmann to the customer
- > High profitability due to low personnel and consumable costs
- > "Made in Germany" machine quality for subsequent decades

BENEFITS FOR CUSTOMERS

- > Protection and maintenance of equipment ensure longevity and value
- > Excellent turning and gliding for relaxed cruising and carving
- > Precise adaptation of equipment to climatic and snow conditions for sheer enjoyment



FEATURES PROFIS150

- > Modern touch panel display offers unrivaled handling through an easy in-feed of various structures
- > "Profi Structure Package" (PSP module) enables working with more than 40 base structures, and ensures the development of new structures for the full spectrum of users
- > Variable speed of stone, diamond, and feed allow various structures
- > High pressure flushing system, used for dressing, permits cool grinding units and cleaning stones with an open structure
- > Variable cut and diamond speed, in combination with the pneumatic diamond dressing (integrated compressor), offer highest base structure flexibility
- > Freely selectable dressing cycles and internal diamond cooling greatly extend the service life of the dressing diamond
- > 3-point centering ensures definite symmetrical structures

TECHNICAL DATA PROFIS150

Dimensions (L x W x H) in mm	1200 x 685 x 1300
Weight in kg	400
Connecting voltage	380–415 V, 3 PH/N/PE, 50 Hz
Connecting plug	CEE 16A 5-pol.
Engine speed 1/min	stepless
Connecting power in kW	4
Collant tank approx. in l	85
Grinding stone in mm	ø 250 x 150
Dressing speed	stepless adjustable
Feed speed	stepless adjustable
Grinding pressure feed in kg	5–50
Diamond infeed	0,01 mm steps programmable

ACCESSORIES AND CONSUMABLES PROFIS150

Description	Article number	Page
Ceramic scraper	750345	33
Binding cassettes		34
For downhill skis, aluminium	1026649	
For children's skis, aluminium	1027477	
For nordic skis, aluminium	750113	
For downhill skis, carbon	1031953	
For nordic skis, carbon	1031954	
Grinding stone		37
ø 250 x 150 mm; pink	1006982	
ø 250 x 150 mm; for Nordic ski	1031972	
Emulsion 10 kg	750331	33
Machine cleaning agent	100349	33
Filter socket white	1029066	33
Filter mat	1029322	33
Filter paper roll	400604	33
One-hand grease gun	750289	33
Grease cartridge	100067	33