

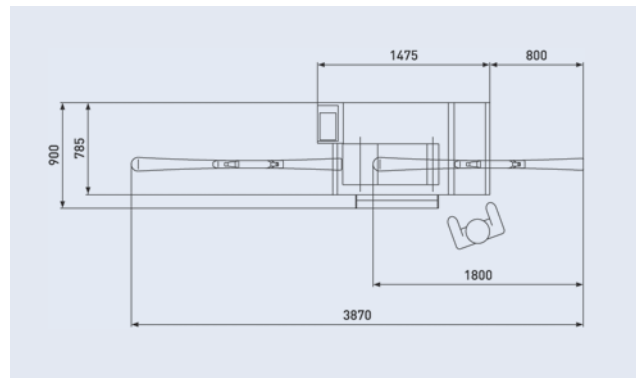
Optional side
edge module KResidue-free grinding
fluid through
filter socket system

Premium base service for ski and snowboard PROFI B350

Increased diversity in weather conditions will lead to a greater deployment of artificial snow. Varying snow characteristics demand various base structures for optimum gliding and turning features. The belt grinding model PROFI B350 (fitted with a 350 mm wide, high grade belt) through its approved technology, ensures unlimited customer enjoyment for years to come. The "Made in Germany" approved workmanship, coupled with convenient and intuitive handling, ensures constant Reichmann base tuning quality for both skis and snowboards. The impressive work production rate, in addition to low operating costs, guarantee high profitability and shorter payback. Together, with existing stone grinding machines, the PROFI B350 prepares any service shop optimal success for the future.

FEATURES

- > Selective automatic feeding ensures uniform grinding results across each ski and board
- > 2 belt speeds, combined with different grain sizes, tuning, and scotch belts, provide a large range of grinding results
- > Convenient and fast belt replacement enhances flexibility to provide various grinding results
- > Accommodation for conical contact disc, as well as the double bearing drive shaft, ensure high precision and great structured results
- > Rubberized surface of contact discs make the belt ideally adaptable for concave/convex boards; therefore, ensuring consistent grinding quality across the board width and beveled edges in one single operation
- > Self-adjusting deflection pulley holds the belt in the ideal position, thereby facilitating handling while saving time
- > Optional side edge module with water cooling system, a separate drive motor, and angle adjustment from 85° to 90° ensures professional side edge tuning
- > PROFI B350 is ideal for a small to medium service work volume, and is a great addition to PROFI S150, PROFI S200 and PROFI S350



BENEFITS FOR USERS

- > With belt pre-grinding, tuning and finishing, PROFI B350 covers all requirements for professional base tuning
- > Fast and flexible service turnaround, thereby providing excellent customer satisfaction and more time for consultation
- > High profitability and accelerated acquisition cost amortization due to fast handling and low costs for personnel and consumables
- > Copes with any snow and weather conditions
- > Premium grinding quality helps strengthen the position of any professional service provider
- > "Made in Germany" machine quality for subsequent decades

BENEFITS FOR CUSTOMERS

- > Protection and care of equipment provide for maintenance of value
- > Excellent turning and gliding performance for relaxed cruising and carving
- > No more brake effects through base damages
- > Side Edge unit (module K) offers customers a secure edge grip for highest driving safety on all slope conditions
- > Precise adaptation of equipment to snow and climatic conditions for sheer enjoyment

TECHNICAL DATA PROFI B350

Dimensions without side edge	1475 x 785 x 1150
with side edge, (L x W x H) in mm	1476 x 850 x 1150
Weight without side edge	410
with side edge, in kg	450
Connecting voltage	380–415 V, 3 PH/N/PE, 50 Hz
Connecting plug	CEE 16A 5-pol.
Engine speed 1/min	470/960
Connecting power in kW	3 (without); 3,54 (with)
Collant tank approx. in l	95
Sanding belt in mm	350 x 2000
Dressing speed	2
Grinding pressure feed in kg	0–50

ACCESSORIES AND CONSUMABLES PROFI B350

Description	Article number	Page
Binding cassettes		
For downhill skis, aluminium	1026649	34
For children's skis, aluminium	1027477	
For nordic skis, aluminium	750113	
Sanding Belt		
Grain 80, 350 x 2000 mm	400729	36
Grain 100, 350 x 2000 mm	400730	
Grain 120, 350 x 2000 mm	400985	
Edge tuning belts		
Grain 80, 20 x 1200 mm	400476	39
Grain 100, 20 x 1200 mm	400477	
Grain 120, 20 x 1200 mm	400586	
Tuning belt cork 350 x 2000 mm	401072	36
Polishing belt scotch 350 x 2000 mm	400982	36
Emulsion 10 kg	750331	33
Machine cleaning agent	100349	33
Filter socket white	1029066	33
One-hand grease gun	750289	33
Grease cartridge	100067	33